

PART OF THE SW.1/4, OF SEC. 34, T.7N., R.1E., S.L.B. & M.  
**SIMPSON SUBDIVISION**

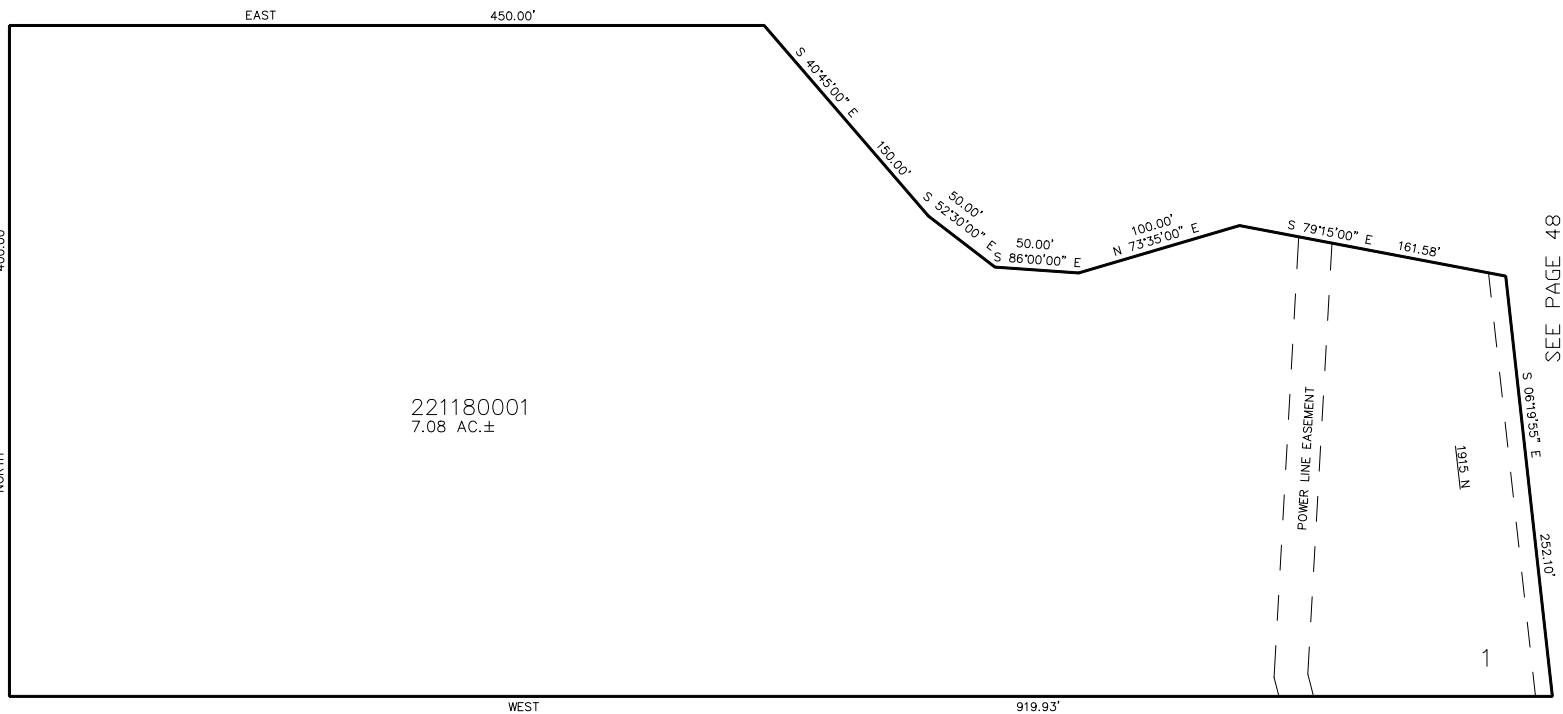
IN WEBER COUNTY

SCALE 1" = 60'

TAXING UNIT: 28

118

SEE PAGE 48



FOR COMPLETE ENG DATA SEE  
ORIGINAL DEDICATION PLAT IN  
BOOK 39, PAGE 82 OF RECORDS.

10' UTILITY & DRAINAGE EASEMENTS EACH  
SIDE OF PROPERTY LINES AS INDICATED  
BY DASHED LINES EXCEPT AS OTHERWISE  
SHOWN.